

Ersatzteilliste
Spare parts list
Liste des pièces de rechange



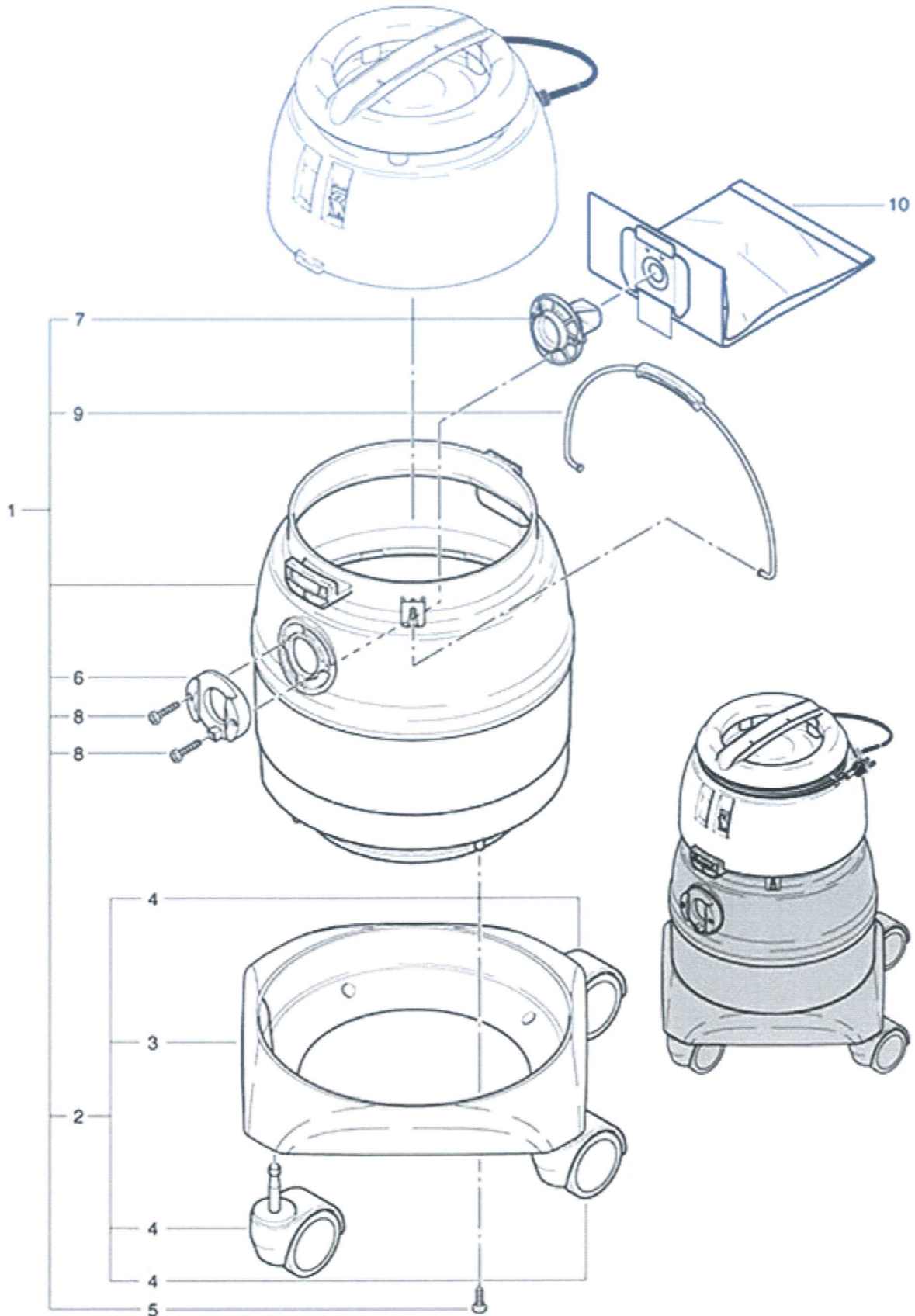
SW 21 combi

Nass- und Trockensauger
Wet and dry vacuum cleaner
Aspirateur à poussière et à eau



**SW 21 Combi
Tank connection**

As at: 06/27/11 Time:13:59



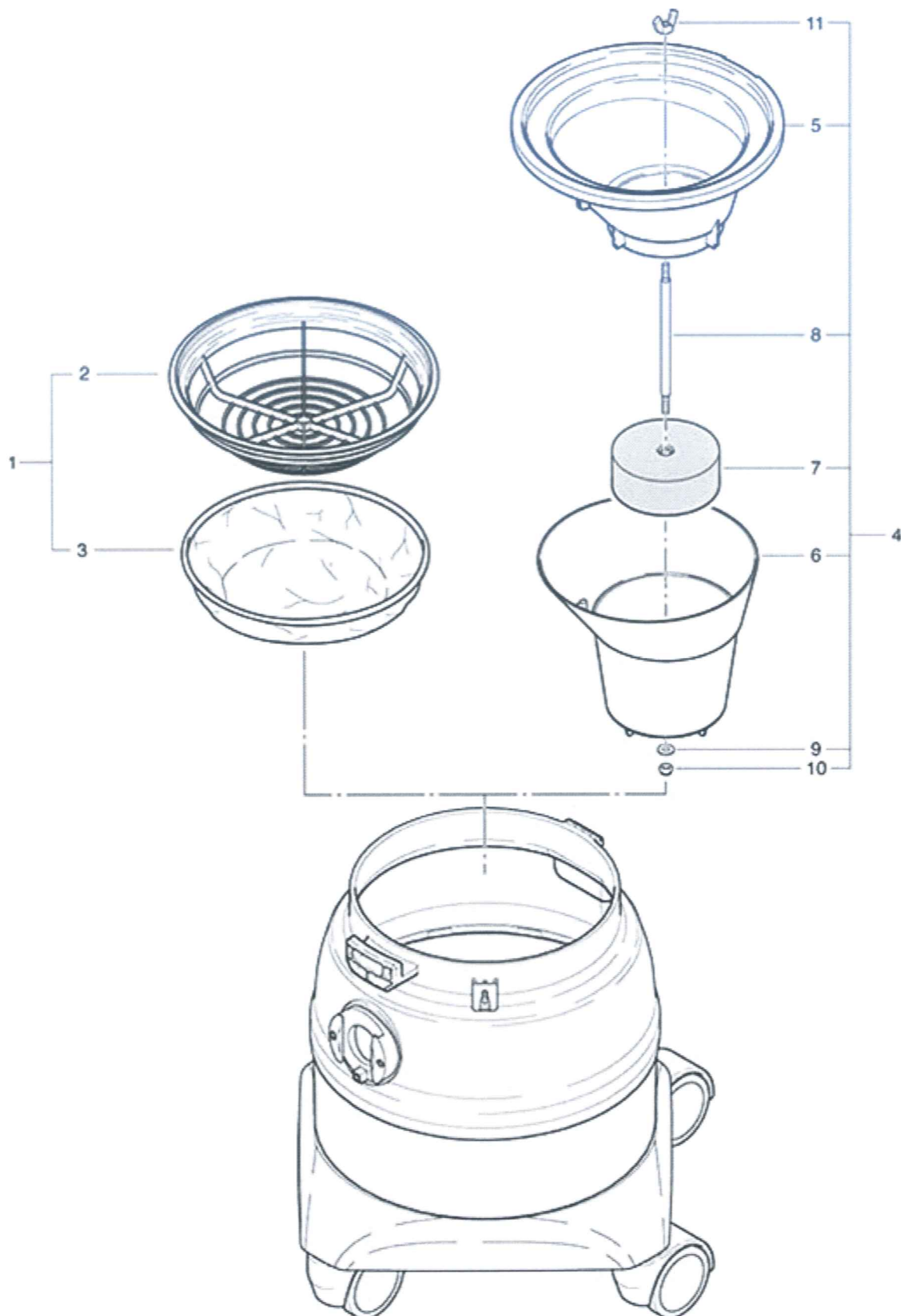
SW 21 Combi Tank connection

As at: 06/27/11 Time:13:59

| Pos. | Description | Reference |
|-------------|--|------------------|
| 01 | Tank connection compl. including items 2-9 | 014.100 |
| 02 | Car compl. including items 3+4 | 014.128 |
| 03 | Car | 014.121 |
| 04 | Swivel castor wheel Ø 75 mm | P...204 G |
| 05 | PT screw KA 50x18 | P...516 Q |
| 06 | Tank connection | 4012234 |
| 07 | Saffle | 014.105 |
| 08 | PT screw KA 50x35 | P...515 N |
| 09 | Handle | P...009 |
| 10 | Packet of 10 dustbags | 020.430 |

SW 21 Combi
Suction application for Wet and dry vacuum cleaner

As at: 06/27/11 Time:13:59



SW 21 Combi

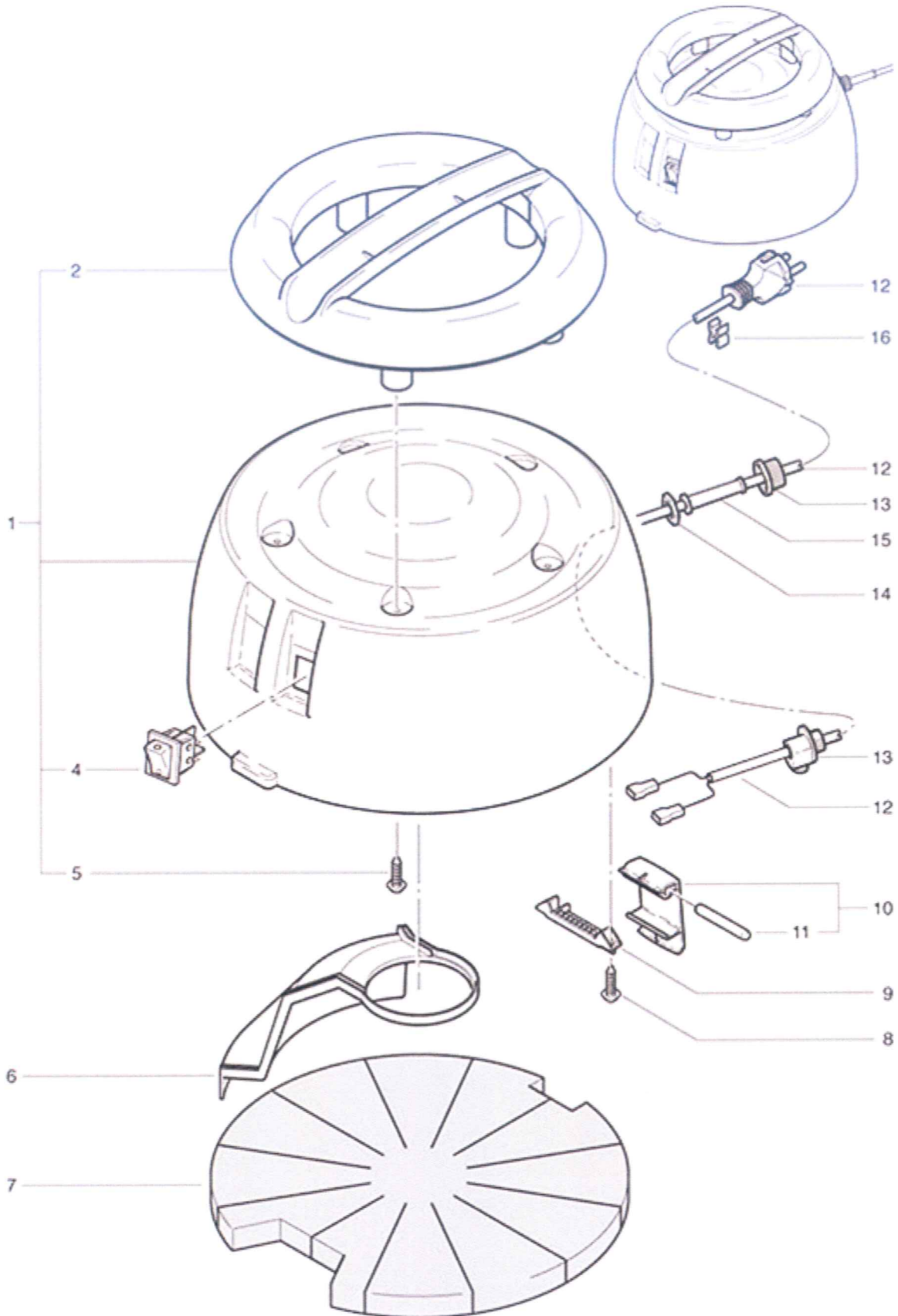
Suction application for Wet and dry vacuum cleaner

As at: 06/27/11 Time:13:59

| Pos. | Description | Reference |
|-------------|---|------------------|
| 01 | Dustbag basket compl. including items 2+3 | 20122519 |
| 02 | Filter cartridge | 4012186 |
| 03 | Filtercloth | 020.320 |
| 04 | Float insert compl. contenant Pos. 5-11 | 014.600 |
| 05 | Tank | 014.622 |
| 06 | cover | 014.623 |
| 07 | Float compl. | 014.620 |
| 08 | Float | 014.624 |
| 09 | Washer M 6 | P...497 K |
| 10 | Stop nut M 6 | P...492 K |
| 11 | Wing nut M 6 | P...253 L |

**SW 21 Combi
Dome**

As at: 06/27/11 Time:14:00



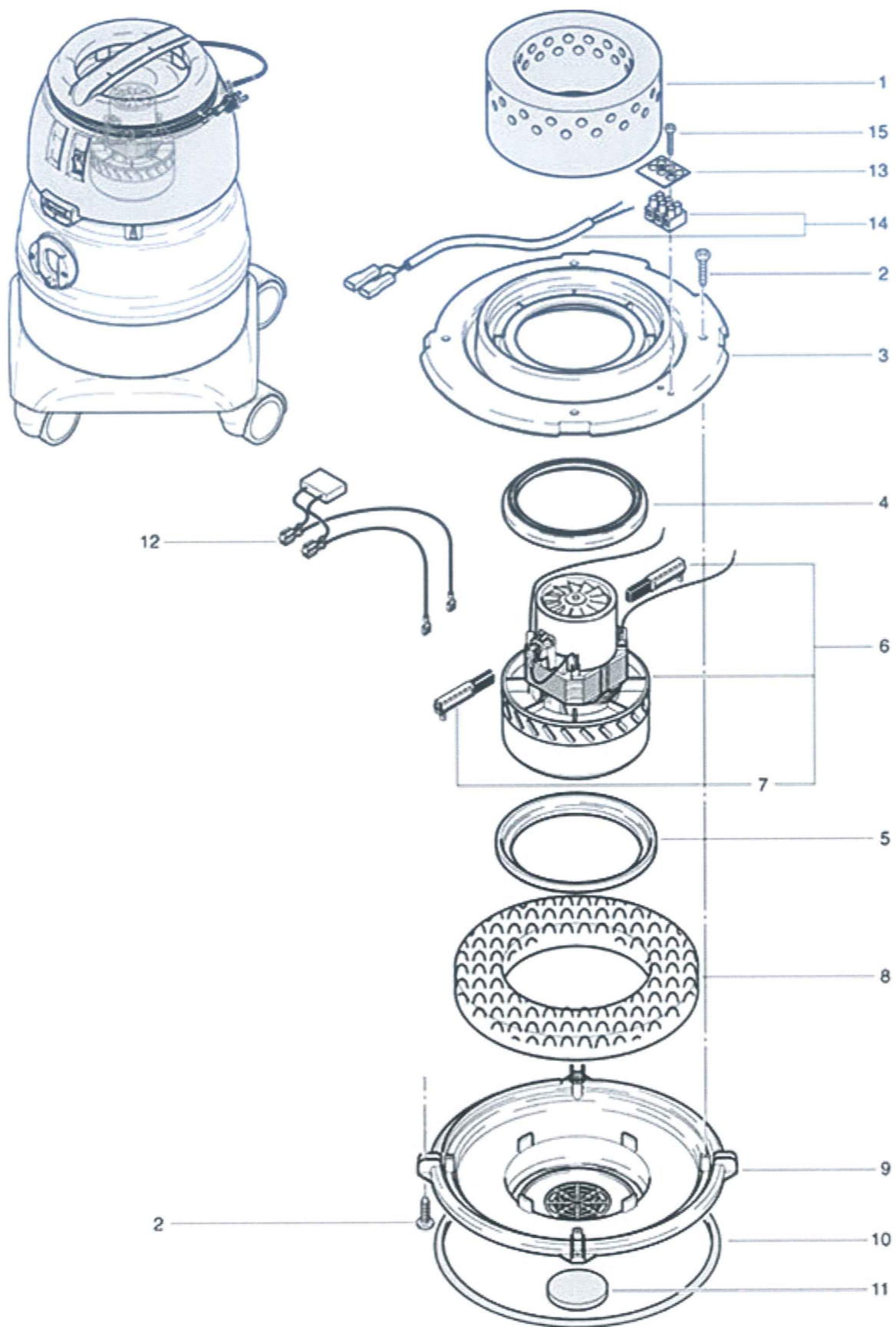
SW 21 Combi Dome

As at: 06/27/11 Time:14:00

| Pos. | Description | Reference |
|-------------|---|------------------|
| 01 | Cover in red compl. including items 2-5 | 021.201 |
| 02 | Handle | 022.112 |
| 04 | Valve-switch | P...240 |
| 05 | PT screw KA 40x18 | P...516 G |
| 06 | Air canal cover | 020.213 |
| 07 | Noise absorber | 021.206 |
| 08 | PT screw KA 30x14 | P...516 E |
| 09 | Pin hold | 022.114 |
| 10 | Seal lever compl. | 022.122 |
| 11 | Pin | 022.115 |
| 12 | Electrical connection VDE | P...288 A |
| 12 | Electrical connection SEV | P...287 A |
| 13 | Cable clamp | P...279 |
| 14 | Conter nut PG 9 | P...279 H |
| 15 | Cable grommet | P...280 |
| 16 | Cable clamp | P...278 |

**SW 21 Combi
Vacuum motor**

As at: 06/27/11 Time:14:01



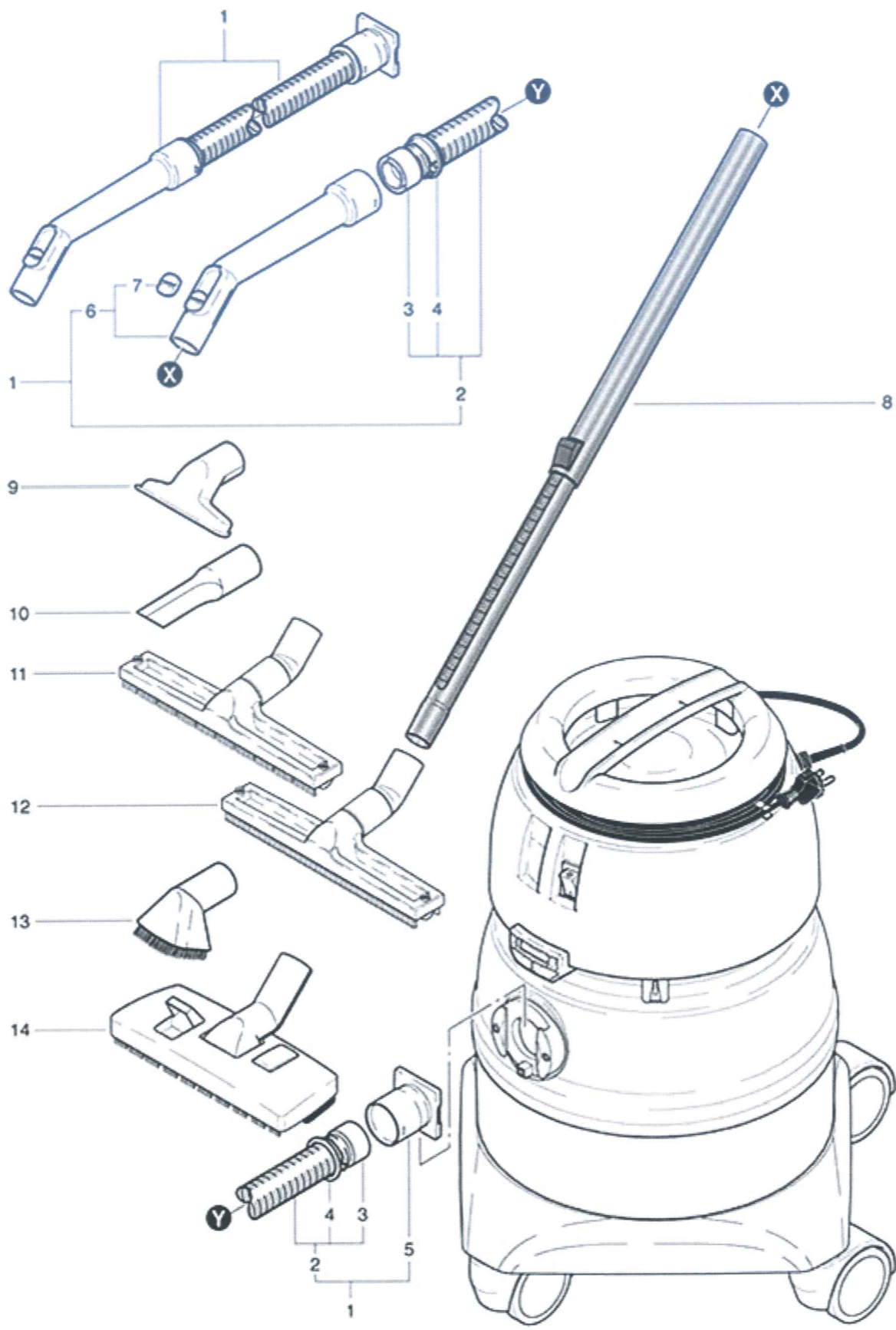
SW 21 Combi Vacuum motor

As at: 06/27/11 Time:14:01

| Pos. | Description | Reference |
|-------------|-------------------------------|------------------|
| 01 | Isolation cap | 020.211 |
| 02 | PT screw KA 40x16 | P...516 C |
| 03 | Motorplate | 020.303 |
| 04 | Seal for motor | 022.133 |
| 05 | Profile | P...971 H |
| 06 | Vacuum motor 230V/50Hz 1000 W | P...870 E |
| 07 | Pair of carbon brushes OEP | P...870 KB |
| 08 | Isolation ring | 020.309 |
| 09 | Reinforcement piece | 020.308 |
| 10 | Bucket gasket | 020.304 |
| 11 | Engine air cleaner | 022.134 |
| 12 | Motor cable compl. | 022.143 |
| 13 | Marking plate | P...390 |
| 14 | Cable tree with cable clamp | 020.307 |
| 15 | PT screw KA 30x20 | P...516 E |

SW 21 Combi
Standard accessoires SW 21 Combi

As at: 06/27/11 Time:13:58



SW 21 Combi

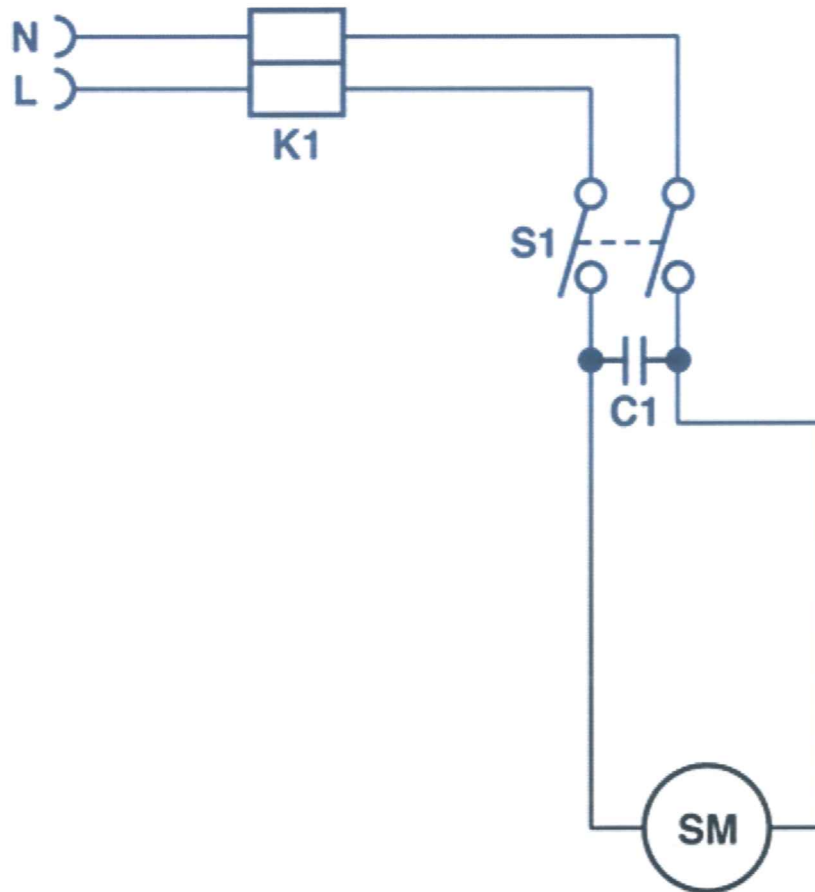
Standard accessoires SW 21 Combi

As at: 06/27/11 Time:13:58

| Pos. | Description | Reference |
|-------------|---|------------------|
| 01 | Suction hose 3.0 m compl. including items 2-7 | 020.567 |
| 02 | Suction hose 3,0 m cpl. incl. Pos. 3+4 | P...562 A |
| 03 | Security ring | P...583 |
| 04 | Connecting ring | P...578 |
| 05 | Hose end connector | 012.570 |
| 06 | Toolhandle compl. incl. Pos. 7 | 900.670 |
| 07 | Slide | P...581 B |
| 08 | Telescopic stainless steel | 022.015 A |
| 09 | Upholstery tool | 645.004 |
| 10 | Crevice tool | 645.006 |
| 11 | Hard floor tool 30 cm | 646.200 |
| 12 | Water suction nozzle 30 cm | 646.100 |
| 13 | Brush nozzle (Optional accessory) | 645.005 |
| 14 | Carpet hardfloor tool (Optional accessory) | 645.103 |

SW 21 Combi
Wiring diagram

As at: 06/27/11 Time:14:01



- K1 = Reihenklemme / Serre-fil / Cable clamp
- S1 = Wippenschalter / Interrupteur / Tumbler switch
- C1 = Kondensator / Condensateur / Capacitor 0.15 F
- SM = Saugmotor / Moteur d'aspiration / Vacuum motor

SW 21 Combi Wiring diagram

As at: 06/27/11 Time:14:01

| Pos. | Description | Reference |
|-------------|-------------------------------|------------------|
| C 1 | Capacitor 0,15 uF | P...393 E |
| K1 | Cable clamp | P...383 H |
| S1 | Tumbler switch | P...240 |
| SM | Vacuum motor 230V/50Hz 1000 W | P...870 E |